



LUCE

SHAPING YOUR LIGHT

LIGHTFIBER

*SOME LIGHTS ARE SMART
WHILE THE OTHERS ARE ONLY LIGHTS.*

LIGHTFIBER

Fiber optic lightening is made trough:

FIBER OPTIC CABLES. Bundles of multiple queues, different lengths and diameters, grouped in a single pipe that goes into the illuminator.

Each queue is polished (lapping process) and the last part is a rigid piece of brass (rivet or terminal) that allows to easily insert it in any other accessory.

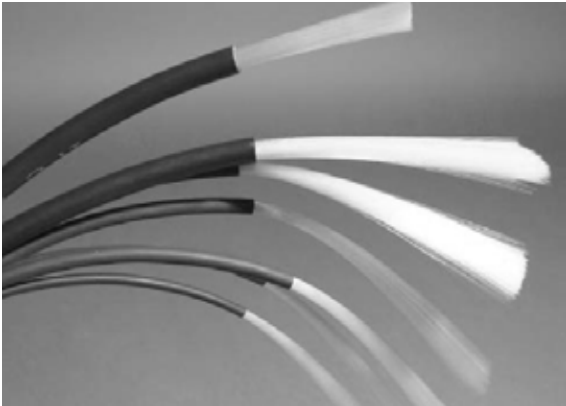
PARTS/ACCESSORIES. Used for hooking the queue to the ceiling.

Also used for creating the preferred light angle and effect increasing or reducing the light beam.

ILLUMINATOR. BOX LED is the evolution of the halogen illuminator for glass and synthetic fiber optic. A saving of electric power of approximately 70% can be achieved, with average life of not less than 50.000/h.

The Fiber Optic system is becoming popular for creating specific lights effects but also for lightening shops, jewelries as well as museums, exhibitions and art galleries.

GLASS FIBER OPTIC



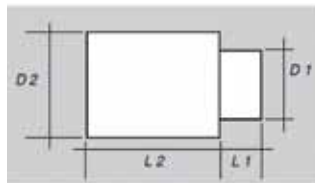
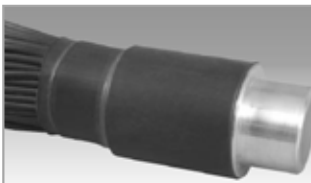
TECHNICAL CHARACTERISTICS

Material	High quality optical glass
Attenuation	150 db / km
Diameter of single monofibres	50 / 100 micron
Conform to regulations	Great Britain BS 6724 - Germany VDE 0207 - France NFC 32323 - Italy CEI 20-22 and 20-37
Certification for naval installations	RINA
Jacket	Megolon (self extinguishing PVC)
Ta	-20° + 80° C

DIAMETERS, COMPOSITION AND TECHNICAL FEATURES OF THE CABLES

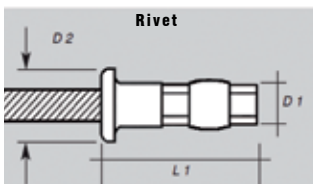
Type	Optical Diameter (mm)	Outer diameter (mm)	Min.Bending Radius (mm)
SIZE 1,5	1,5 mm	1,7 mm	18 mm
SIZE 4	2,6 mm	4,5 mm	25 mm
SIZE 12	4,3 mm	6,5 mm	44 mm
SIZE 24	6,0 mm	10,0 mm	68 mm

PIPE

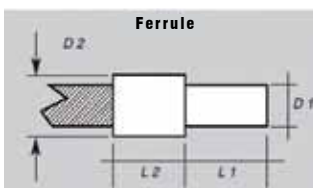


Lenght L1 (mm)	Lenght L2 (mm)
25 mm	60 mm
Diameter D1 (mm)	Diameter D2 (mm)
30 mm	60 mm

“LUX” FINISHING RIVETS AND FERRULES FOR GLASS FIBERS OPTIC



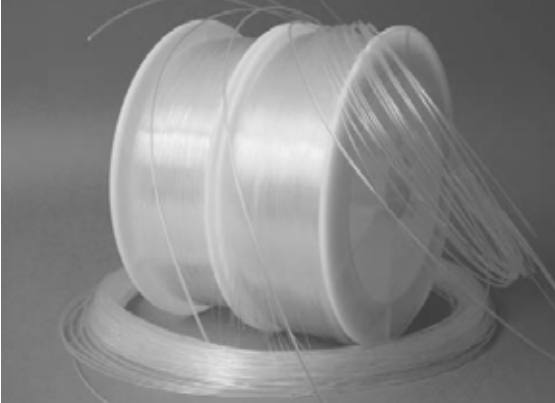
Type	Size Used	Lenght L1 (mm)	Diameter D1 (mm)	Diameter D2 (mm)
RL/1	1,5	13 mm	3,0 mm	4,5 mm
RL/4	4,0	13 mm	4,5 mm	7,0 mm
RL/12	12,0	17 mm	7,5 mm	11,0 mm



Type	Size Used	Lenght L1+L2 (mm)	Diameter D1 (mm)	Diameter D2 (mm)
TL/24	24	32 mm (L1+L2)	8 mm	12 mm

The fiber bundle can be customized on demand.

SYNTHETIC MONOFIBER WITHOUT JACKET



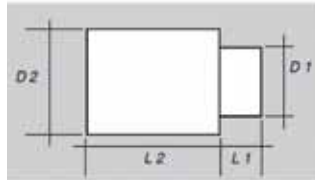
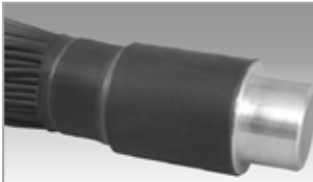
TECHNICAL CHARACTERISTICS

Material	PMMA
Attenuation	150 db / km
Certification for naval installations	RINA
Ta	-55° +70° C

DIAMETERS, COMPOSITION AND TECHNICAL FEATURES OF THE CABLES

Type	Optical Diameter(mm)	Min.Bending Radius (mm)
FSN -500	0,50 mm	5 mm
FSN -750	0,75 mm	8 mm
FSN -1500	1,50 mm	15 mm

PIPE



Lenght L1 (mm)	Lenght L2 (mm)
25 mm	60 mm
Diameter D1 (mm)	Diameter D2 (mm)
30 mm	60 mm

The fiber bundle can be customized on demand.

SYNTHETIC FIBER WITH JACKET



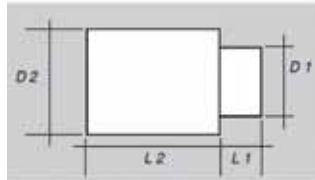
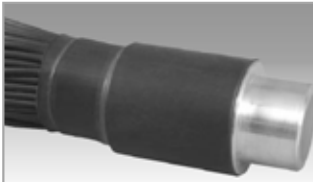
TECHNICAL CHARACTERISTICS

Material	PMMA
Attenuation	150 db / km
Certification for naval installations	RINA
Jacket	PVC Polyamide
Ta	-55° +70° C

DIAMETERS, COMPOSITION AND TECHNICAL FEATURES OF THE CABLES

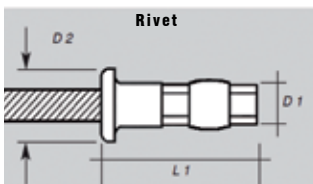
Type	Optical Diameter (mm)	Outer diameter (mm)	Min.Bending Radius (mm)
CSM-1	1,0 mm	2,2 mm	18 mm
CSM-1,5	1,6 mm	2,7 mm	22 mm
CSM-2	2,0 mm	2,7 mm	22 mm
CSF-4	4,0 mm	6,5 mm	33 mm

PIPE

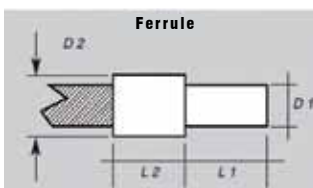


Lenght L1 (mm)	Lenght L2 (mm)
25 mm	60 mm
Diameter D1 (mm)	Diameter D2 (mm)
30 mm	60 mm

“LUX” FINISHING RIVETS AND FERRULES



Type	Size Used	Lenght L1 (mm)	Diameter D1 (mm)	Diameter D2 (mm)
RL/1M	CSM-1	13 mm	3,0 mm	4,5 mm
RL/1,5M	CSM-1,5	13 mm	3,5 mm	5,5 mm
RL/2M	CSM-2	13 mm	3,5 mm	5,5 mm



Type	Size Used	Lenght L1+L2 (mm)	Diameter D1 (mm)	Diameter D2 (mm)
TL/4F	CSF-4	32 mm (L1+L2)	8 mm	12 mm

The fiber bundle can be customized on demand.

SIDE LIGHT OPTIC FIBER



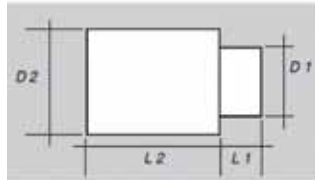
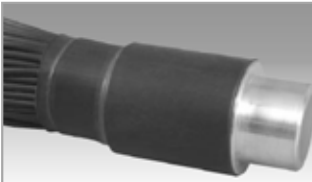
TECHNICAL CHARACTERISTICS

Material	PMMA
Attenuation	150 db / km
Certification for naval installations	RINA
Ta	-55° +70° C

DIAMETERS, COMPOSITION AND TECHNICAL FEATURES OF THE CABLES

Type	Optical Diameter (mm)	Outer diameter (mm)	Min.Bending Radius (mm)
SIZE 1	1,3 mm	2,2 mm	18 mm

PIPE

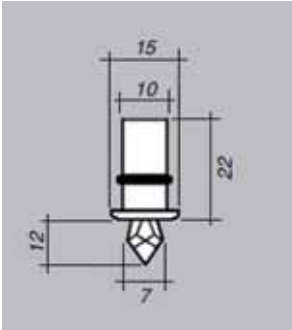


Lenght L1 (mm)	Lenght L2 (mm)
25 mm	60 mm
Diameter D1 (mm)	Diameter D2 (mm)
30 mm	60 mm

The fiber bundle can be customized on demand.

Accessories for Fiber Optic

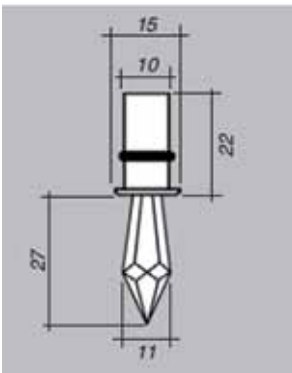
STRASS 12



TECHNICAL CHARACTERISTICS

<i>Application</i>	Decorative, starry sky lighting
<i>Mounting</i>	O-ring or pressure sealing
<i>Suitable for fiber</i>	From size 1 to size 7, with RL rivet
<i>Material</i>	Brass and crystal ferrule, 12 mm long
<i>Finishing</i>	Chrome or gold

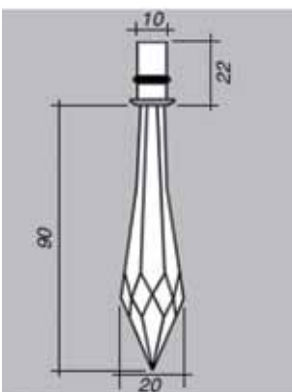
STRASS 27



TECHNICAL CHARACTERISTICS

<i>Application</i>	Decorative, starry sky lighting
<i>Mounting</i>	O-ring or pressure sealing
<i>Suitable for fiber</i>	From size 1 to size 7, with RL rivet
<i>Material</i>	Brass and crystal ferrule, 27 mm long
<i>Finishing</i>	Chrome or gold

STRASS 90



TECHNICAL CHARACTERISTICS

<i>Application</i>	Decorative, starry sky lighting
<i>Mounting</i>	O-ring or pressure sealing
<i>Suitable for fiber</i>	From size 1 to size 7, with RL rivet
<i>Material</i>	Brass and crystal ferrule, 90 mm long
<i>Finishing</i>	Chrome or gold

Ovidio, nelle *Metamorfosi*, presta il ruolo del padre degli dei, Zeus: *Leda si pinse che giace sotto la penna del cigno.*



Michelangelo
Studio per il ruolo di Zeus
1530-1535
Inchiostro su carta

MICHELANGELO



Michelangelo
Studio di anatomia per
la figura di Leda e il cigno
1530-1535
Inchiostro su carta

BOX LED



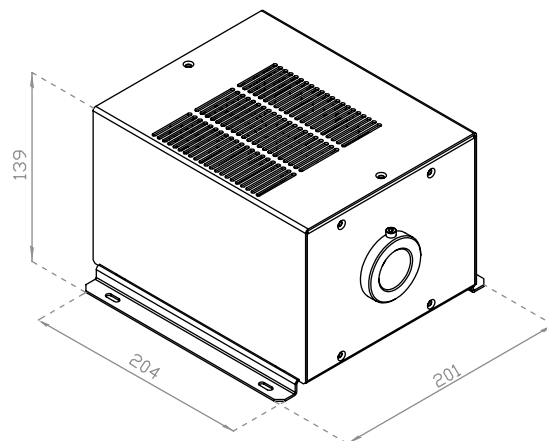
GENERAL CHARACTERISTICS

Power absorption	25 W
LED power absorption	19.4 W
Led color temperature	3000K - 4000K - 5000K (3 SDCM) Other CCT are available on demand
Color Rendering Index	CRI > 90
Protection grade	IP40
Ta	-20° ÷ 40° C
Led Lumen output	2500 Lumen (@ CCT 3000K)





ELECTRICAL CHARACTERISTICS

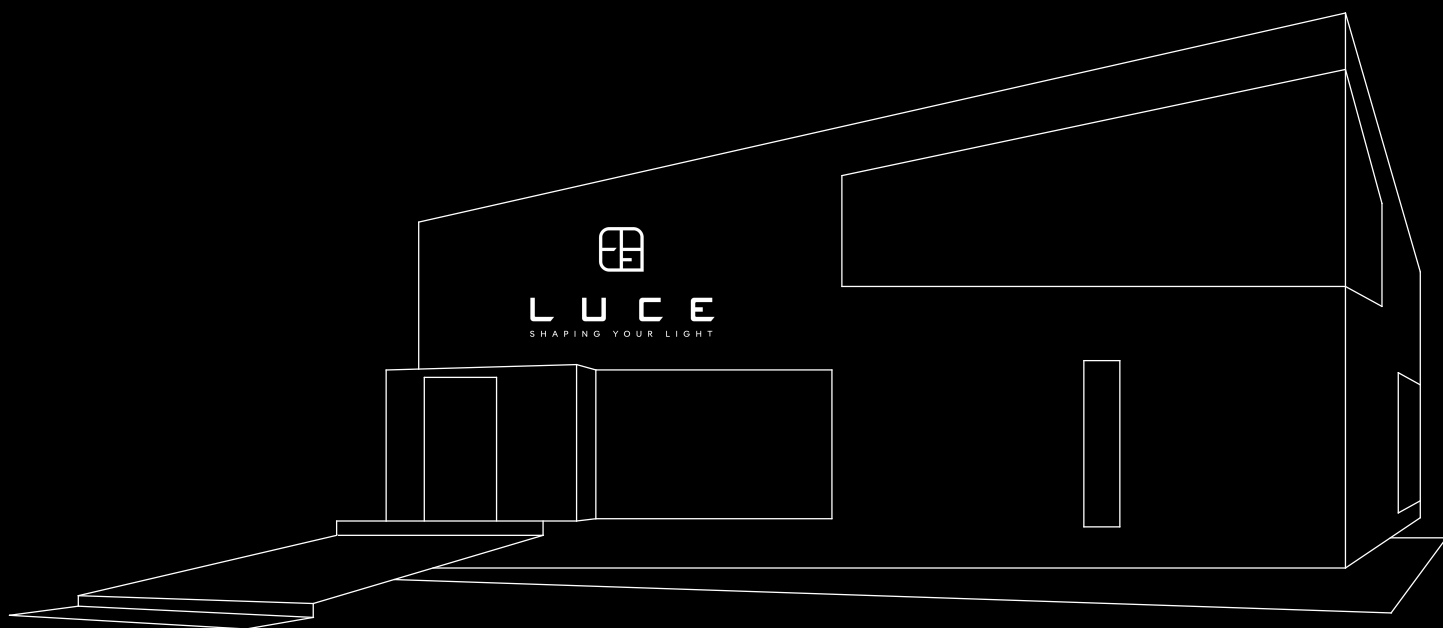
Input voltage	230 VAC
DMX dimmable	YES
DALI dimmable	YES
Individual dimming	YES (with button)
Safety class	I

DIMENSIONS (mm)



CODE

System	Watt	CRI	Type	LED color temperature	Finishing	Dimming
HIL	25 25 Watt	9 CRI > 90	DMX DMX dimmable	 300 3000 K	A1 Black anodized	0 Dimming
			DAL DALI dimmable	 400 4000 K		S Star effect
			BUT Dimming with button	 500 5000 K		
HIL	25 25 Watt	9 CRI > 90	DMX DMX dimmable	 RGB	A1 Black anodized	0 Dimming
			DAL DALI dimmable			S Star effect



The pictures of the products installed have been realized and published in the catalogue thanks to the availability of the back stage areas and to the owners authorization and approval.
Many thanks to all the people who have given their authorization and approval for the utilization of the pictures.

Reproduction prohibited.

LUCE-ms reserves the right to change and modify the products without notice.